

שמע  
Sh'ma

נשמע

NiSh'ma  
Let us hear

Heidi Berrin Shonkoff

**Learning by Heart**

60" x 48"

Acrylic on Canvas



All my life I have studied what is underneath. I have focused my 25-year psychotherapy practice and my art on excavating truth — understanding and seeing what is not immediately visible. The process of uncovering layers — places that are vibrant, dark, passionate, mysterious, hidden, and utterly luminous — excites me.

Though as a woman and a psychotherapist I rely on language, I paint from a place without words. Here I speak through my love of color, through the textures of thick, sensuous paint, and with the light that emerges through transparent glazes. Always present for me is a vigorous pursuit of the balance between intensity and stillness.

My paintings bring my impulses, intuition, and deep emotional feelings to a more conscious level. Throughout, there is a constant theme - an attempt to control and balance chaotic forces in our lives. I search for an equilibrium by using a broad spectrum of color and a multiplicity of approaches, controlling and directing the movement of amorphous elements by the stricter structural boundaries imposed by both the canvas and the painted forms themselves. With the rhythm of color and texture and repetition of forms, I seek to turn each piece into a visual symphony.



Sharon Booma

**Undisguised Wonder**

Oil / mixed media on panel

60" x 60" x 3"



Silvio Wolf

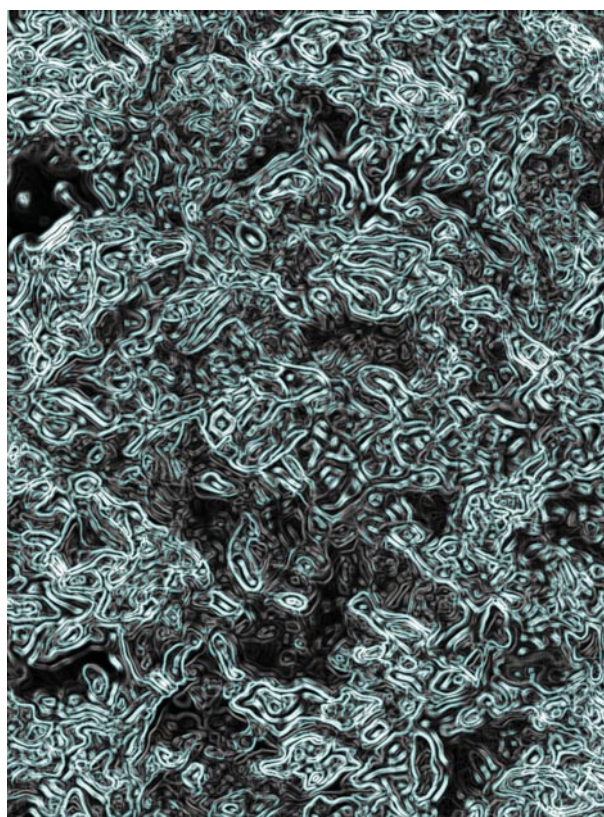
**Chance 19**

49.25" x 32.25"

chromogenic dye coupler print

© Silvio Wolf. Courtesy Robert Mann Gallery, New York

My work explores notions of what is "real and possible" through the antinomies of "presence and absence," "apparition and disappearance," "through and beyond." *Chance 19* represents a real place of experience and recognition; it creates a connection and is the symbol of a division. It shows a transition between two states, a vibrating boundary that joins and yet separates. The image speaks about the experience of visible existence while alluding to the invisible we belong to.



Joshua Abarbanel

**String Theory #012**

digitally created

40" x 60"

I was very moved by Heidi's piece and the notion of uncovering layers as revelation. I use a similar process in my work, which is inspired and informed by the colors, forms, and structures found in biological, botanical, and geological forms. Exploring the relationship

between the individual elements of structures and the larger forms within which they exist, I use line, color, and shape to create abstract, multiple-perspective compositions that allude to a variety of metaphoric and symbolic meanings. Read on their surface level for the sheer visual pleasure of exploration and discovery, the multilayered imagery creates aqueous vistas of new worlds for the eye to inhabit and explore. On a metaphoric level, the concepts of structure, connections, support, separation, expansion, contraction, growth, and decay can be examined in the work as well. Ultimately the work is about the yearning we feel when touched or inspired by beauty, the longing ache that transcendent experiences always leave us with as they inevitably pass, and the personal and universal rebirth and transformation that occurs each time this is felt.